

General Electric Company

Schenectady, N.Y.

OCTOBER, 1918

*BULLETIN No. 54729A

PARTS OF TYPE MS-114 FORM A SWITCH

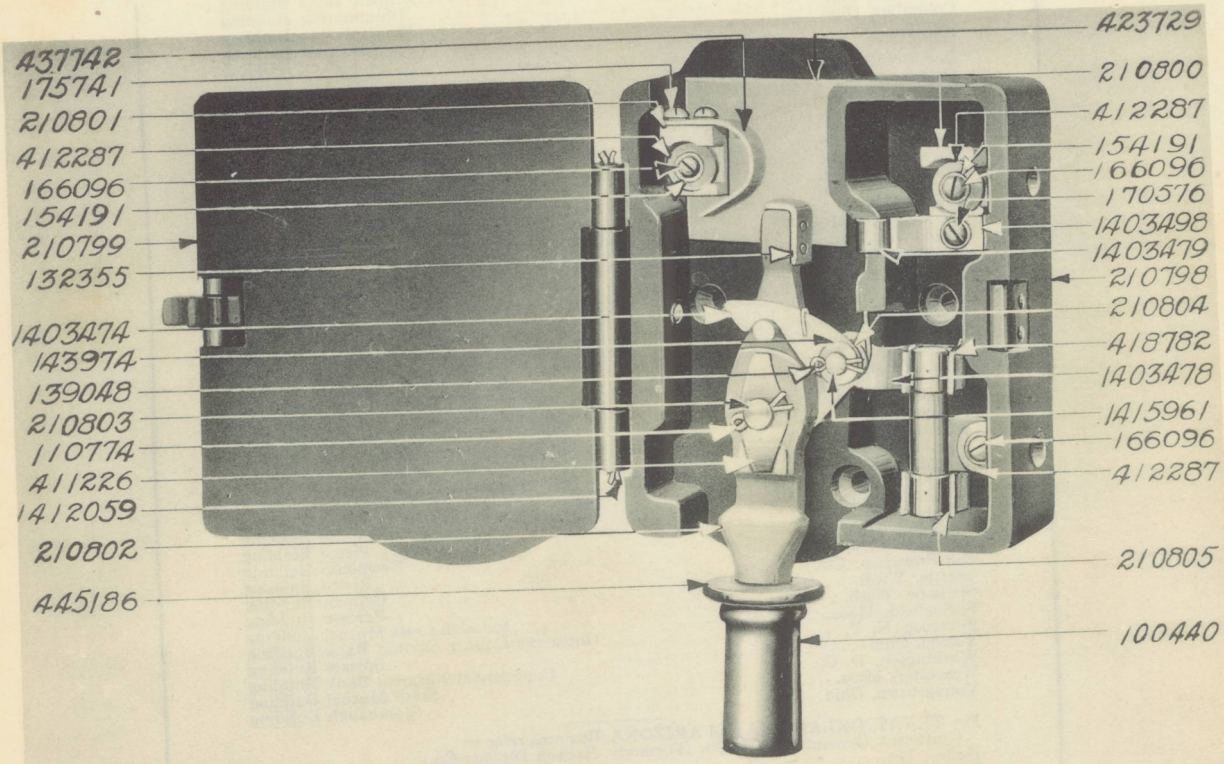
Cat.No.	Description
210797	Type MS-114 Form A Switch
	Following are the parts:-
210798	Switch box
210799	Front cover for switch box
1412059	Hinge pin for cover (1/8 in. by 4 1/8 in. split ends)
423608	Back cover for switch box
179482	Screw fastening back cover to switch box (No. 6, 5/8 in. f.h. sherardized)
423729	Burning plate
210800	Terminal block, right-hand
210801	Terminal block, left-hand, with contact spring
437742	Contact spring for No. 210801
175741	Screw fastening contact spring to terminal block (8-36, 5/16 in. r.h. sherardized)
154190	Spring lock washer for No. 175741 (3/16 in. by 3/8 in. by .051 in.)
166096	Connection screw for terminal block (10-30, 3/8 in. r.h. sherardized)
412287	Washer for No. 166096 (13/64 in. by 5/8 in. by .060 in. brass)
154191	Spring lock washer for No. 166096 (13/64 in. by 25/64 in. by .0625 in.)
1403479	Contact spring for right-hand terminal block
1403498	Stop for contact spring
1403480	Contact base for contact spring
170576	Screw fastening contact spring and stop to base (10-30, 1/4 in. r.h. sherardized)
154191	Spring lock washer for No. 170576 (13/64 in. by 25/64 in. by .0625 in.)
180235	Screw fastening No. 170576 and contact base to switch box (10-30, 1/2 in. f.h. sherardized)
175742	Screw fastening No. 210801 and burning plate to switch box (8-36, 1/2 in. f.h. sherardized)
210802	Handle lever with handle and copper contact
132355	Copper contact with rivets
100440	Handle with stud
445186	Guard for handle

NOTE:-Data subject to change without notice

*Supersedes Bulletin No. 54729

PARTS OF TYPE MS-114 FORM A SWITCH

Cat.No.	Description
210803	Fulcrum post with support, for handle lever
144066	Screw fastening fulcrum post support to switch box (14-24, 5/8 in. f.h. sherardized)
150479	Nut for No. 144066 (14-24, hex. st'd. sherardized)
154194	Spring lock washer for No. 150479 (17/64 in. by 29/64 in. by 5/64 in. thick)
411226	Spring washer for fulcrum post
110774	Spring cotter for No. 210803 (3/32 in. by 5/8 in. sherardized)
1405474	Pawl for handle lever
210804	Spring for pawl
1415961	Bearing post for pawl
143974	Washer for bearing post (17/64 in. by 1/2 in. by .0625 in. sherardized)
150279	Washer for bearing post (13/64 in. by 13/32 in. by .044 in. sherardized)
150263	Nut for bearing post (10-30, hex. st'd. sherardized)
154191	Spring lock washer for No. 150263 (13/64 in. by 25/64 in. by .0625 in.)
139048	Spring cotter for No. 1415961 (5/64 in. by 3/8 in. sherardized)
1403478	Connection plate for handle lever fulcrum post, pawl bearing post and fuse clip
418782	Fuse clip, upper
175742	Screw fastening connection plate and fuse clip to switch box (8-36, 1/2 in. f.h. sherardized)
1403477	Retaining nut for fuse clip, used with screw No. 175742
210805	Fuse clip, lower, with support
175749	Screw fastening fuse clip support to switch box (10-30, 5/16 in. f.h. sherardized)
166096	Connection screw for fuse clip support (10-30, 3/8 in. r.h. sherardized)
412287	Washer for No. 166096 (13/64 in. by 5/8 in. by .060 in. brass)
154191	Spring lock washer for No. 166096 (13/64 in. by 29/64 in. by .0625 in.)



Type MS-114 Form A Switch

GENERAL ELECTRIC COMPANY

PRINCIPAL OFFICES: SCHENECTADY, N. Y.

SALES OFFICES (Address nearest Office)

Atlanta, Ga.	Third National Bank Building
Baltimore, Md.	Lexington Street Building
Birmingham, Ala.	Brown-Marx Building
Boston, Mass.	84 State Street
Buffalo, N. Y.	Electric Building
Butte, Mont.	Electric Building
Charleston, W. Va.	Charleston National Bank Building
Charlotte, N. C.	Commercial National Bank Building
Chattanooga, Tenn.	James Building
Chicago, Ill.	Monadnock Building
Cincinnati, Ohio	Provident Bank Building
Cleveland, Ohio	Illuminating Building
Columbus, Ohio	The Hartman Building
Dayton, Ohio	Schwind Building
Denver, Colo.	First National Bank Building
Des Moines, Iowa	Hippee Building
Detroit, Mich.	Dime Savings Bank Building
Duluth, Minn.	Fidelity Building
Elmira, N. Y.	Hulett Building
Erie, Pa.	Commerce Building
Fort Wayne, Ind.	1600 Broadway
Hartford, Conn.	Hartford National Bank Building
Indianapolis, Ind.	Traction Terminal Building
Jacksonville, Fla.	Heard National Bank Building
Joplin, Mo.	Miner's Bank Building
Kansas City, Mo.	Dwight Building
Knoxville, Tenn.	Burwell Building
Los Angeles, Cal.	Corporation Building, 724 S. Spring Street
Louisville, Ky.	Starks Building
Memphis, Tenn.	Randolph Building
Milwaukee, Wis.	Public Service Building
Minneapolis, Minn.	410 Third Ave., North
Nashville, Tenn.	Stahlman Building
New Haven, Conn.	Second National Bank Building
New Orleans, La.	Maison Blanche Building
New York, N. Y.	Equitable Building, 120 Broadway
Niagara Falls, N. Y.	Cluck Building
Omaha, Neb.	Electric Building
Philadelphia, Pa.	Witherspoon Building
Pittsburgh, Pa.	Oliver Building
Portland, Ore.	Electric Building
Providence, R. I.	Turk's Head Building
Richmond, Va.	Virginia Railway & Power Building
Rochester, N. Y.	Granite Building
St. Louis, Mo.	Pierce Building
Salt Lake City, Utah	Newhouse Building
San Francisco, Cal.	Rialto Building
Seattle, Wash.	Colman Building
Spokane, Wash.	Paulsen Building
Springfield, Mass.	Massachusetts Mutual Building
Syracuse, N. Y.	Onondaga County Savings Bank Building
Toledo, Ohio	Spitzer Building
Washington, D. C.	Commercial National Bank Building
Worcester, Mass.	State Mutual Building
Youngstown, Ohio	Stambaugh Building

For TEXAS, OKLAHOMA and ARIZONA Business refer to
 Southwest General Electric Co. (Formerly Hobson Electric Co.)
 Dallas, Tex. Interurban Building
 El Paso, Tex. 500 San Francisco Street
 Houston, Tex. Third and Washington Streets
 Oklahoma City, Okla. 1 West Grande Ave.

Motor Agencies in all large cities and towns

Partial List of FOREIGN Sales Offices

General Electric Co. Foreign Dept.	Schenectady, N. Y.
General Electric Co., Foreign Dept.	Equitable Bldg., 120 Broadway, New York City
General Electric Co. of N. Y.	83 Cannon St., London, E. C., England
Australian General Electric Co.	Melbourne and Sydney
Companhia General Electric do Brazil	Rio de Janeiro
Cia. General Electric Sudamericana	Buenos Aires
Mexican General Electric Co.	City of Mexico and Guadalajara
South African General Electric Co.	Johannesburg and Cape Town

Representatives and Agents in all countries

For all CANADIAN Business refer to Canadian General Electric Co., Ltd., Toronto, Ont.